

# Duke of Northumberland's River Improvement Works

*Riverside Walk, Isleworth: 19<sup>th</sup> February – 9<sup>th</sup> March 2018*



# Duke of Northumberland's River Improvement Works

*Riverside Walk, Isleworth: 19<sup>th</sup> February – 9<sup>th</sup> March 2018*

1. Why is this part of the river not reaching its full potential for wildlife?
2. How will the river be improved for wildlife?
3. How will the improvements look once completed?
4. How are we involving the local community with the project?
5. Is there an increased risk of flooding?
6. When will the works take place and how will the site be accessed?

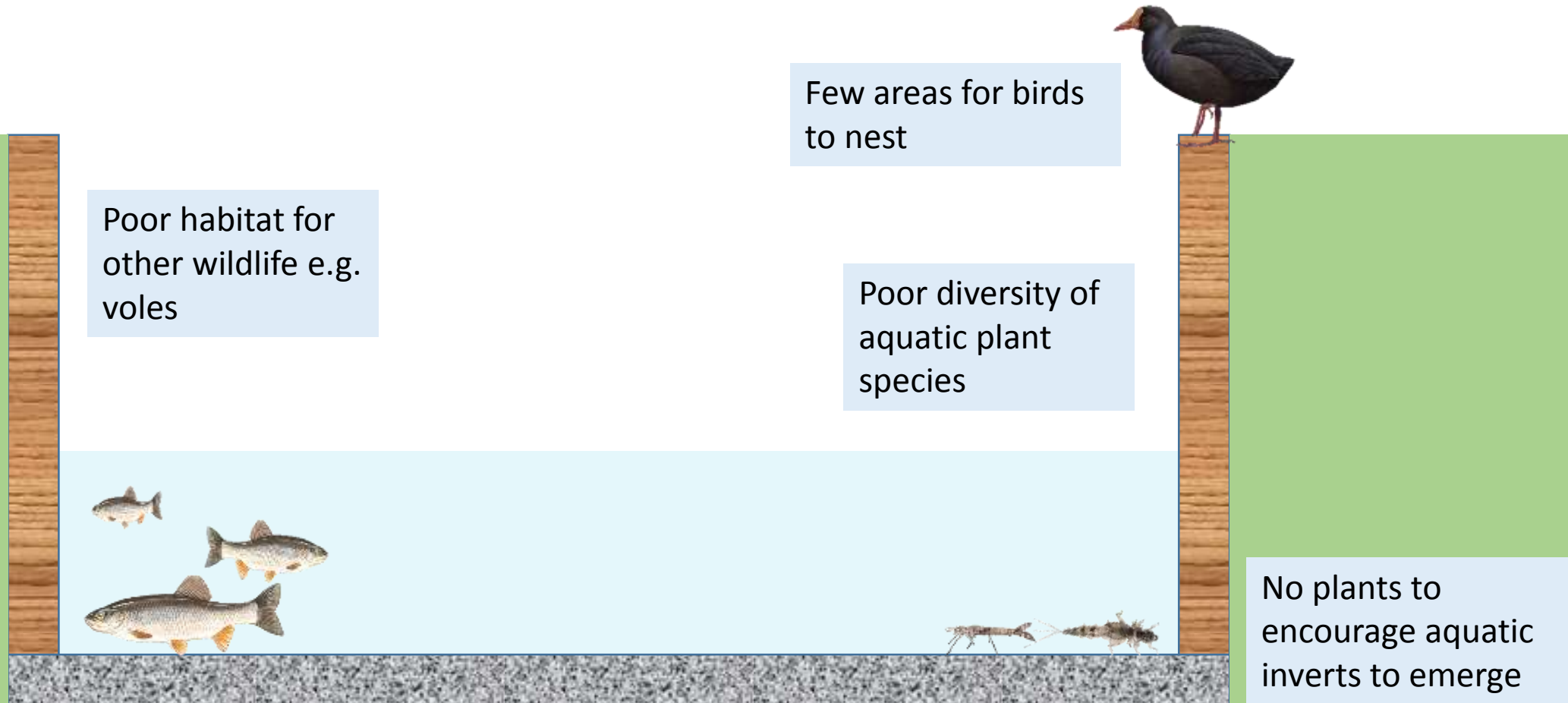
# Why is this part of the river not reaching its full potential for wildlife?

## *1. Artificial Banks (toe boarding)*



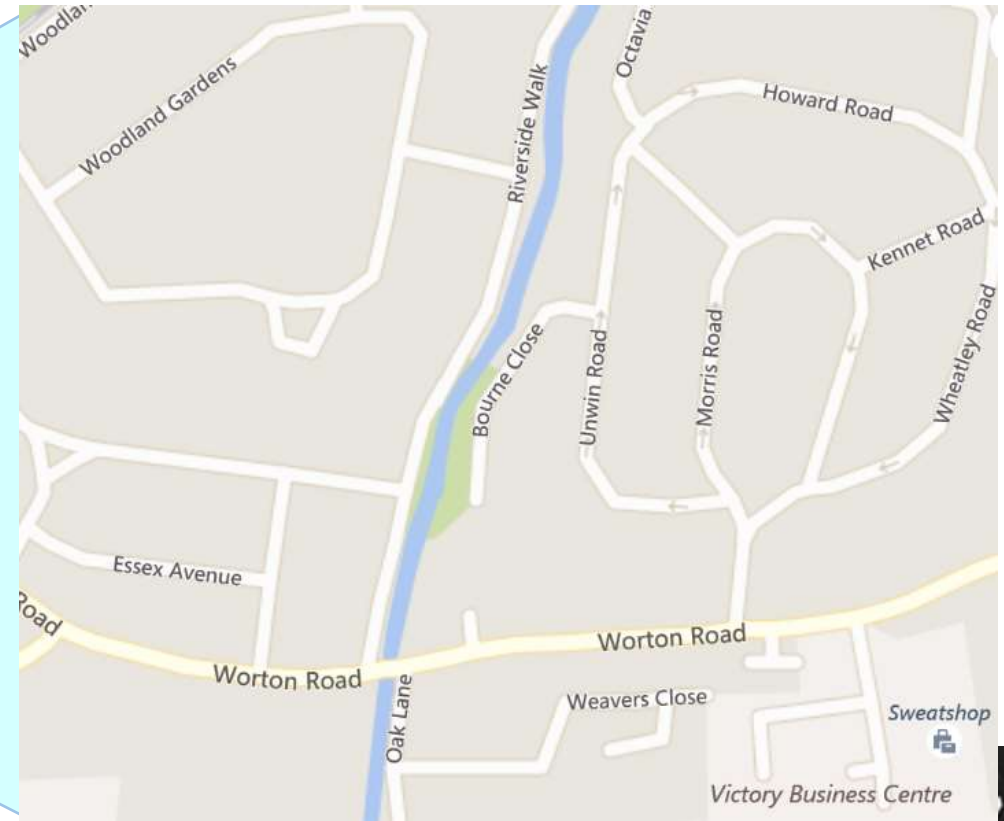
# Why is this part of the river not reaching its full potential for wildlife?

## 1. *Artificial Banks (toe boarding)* *This has led to...*



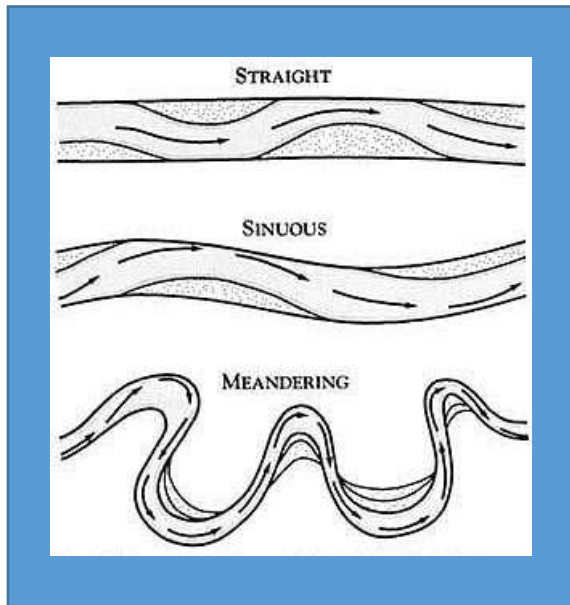
# Why is this part of the river not reaching its full potential for wildlife?

## *2. The channel is straightened and lacks natural features*

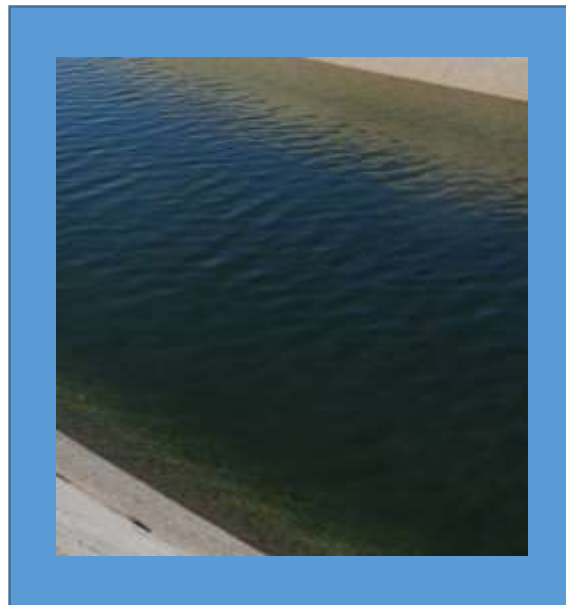


# Why is this part of the river not reaching its full potential for wildlife?

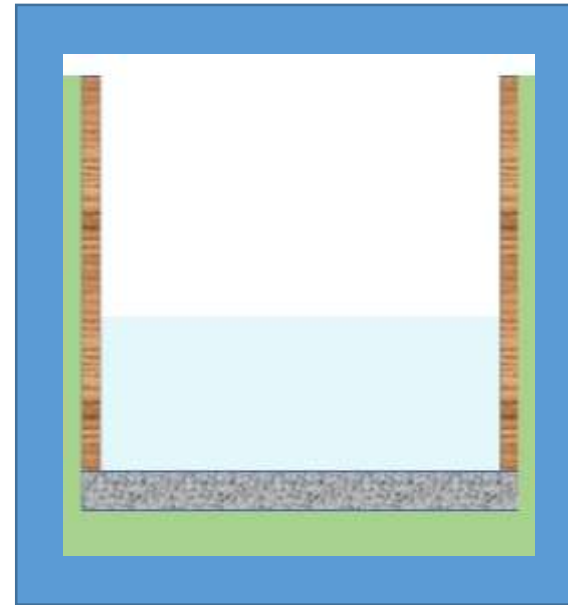
2. *The channel is straightened and lacks natural features*  
*This has led to...*



Lack of sinuosity



Unvaried / uniform flow

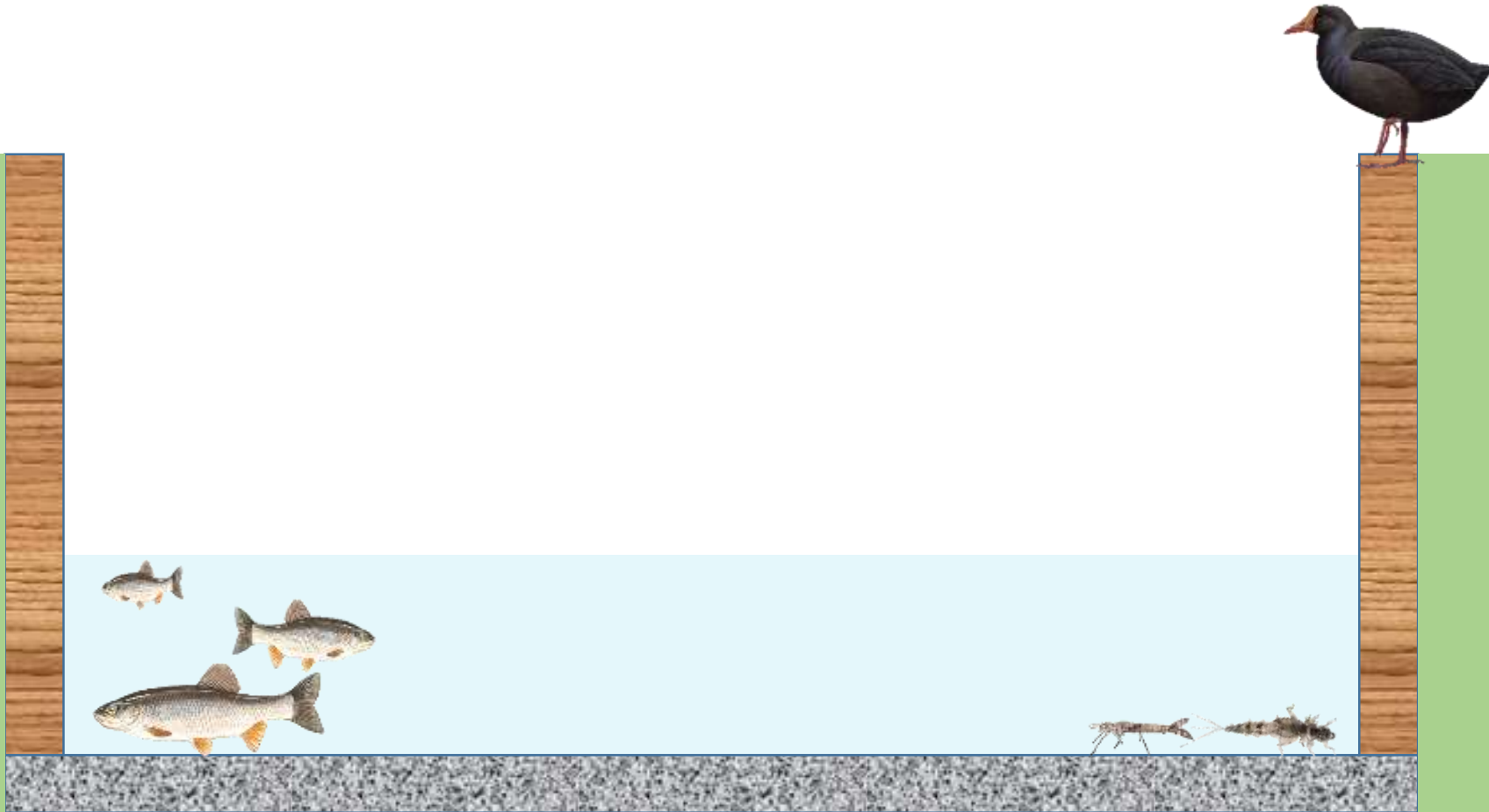


Flat, featureless riverbed



Areas of siltation

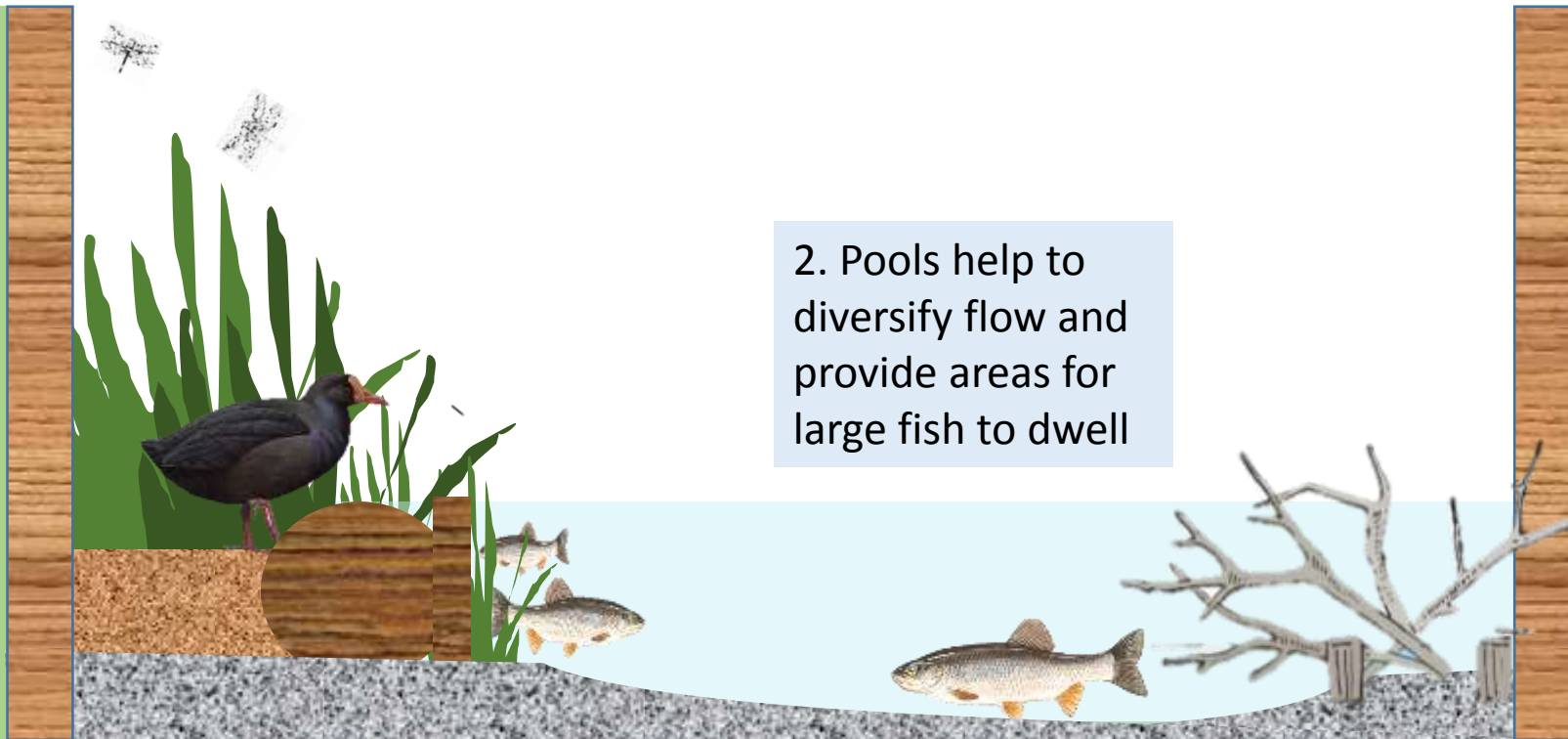
# How will the river be improved for wildlife for wildlife?



# How will the river be improved for wildlife?

1. *An aquatic ledge will be installed to improve marginal habitat.*
2. *Pools will be created to provide deeper areas for larger fish to thrive.*
3. *Flow deflectors will be installed to increase sinuosity and to provide refuge habitat.*

1. The ledge provides a space for birds to nest, fish to shelter & invertebrates to emerge



2. Pools help to diversify flow and provide areas for large fish to dwell

3. Flow deflectors keep pools free from silt, improve flow and provide refuge areas for wildlife



# How will the improvements look once completed?

*Before:*



*After:*



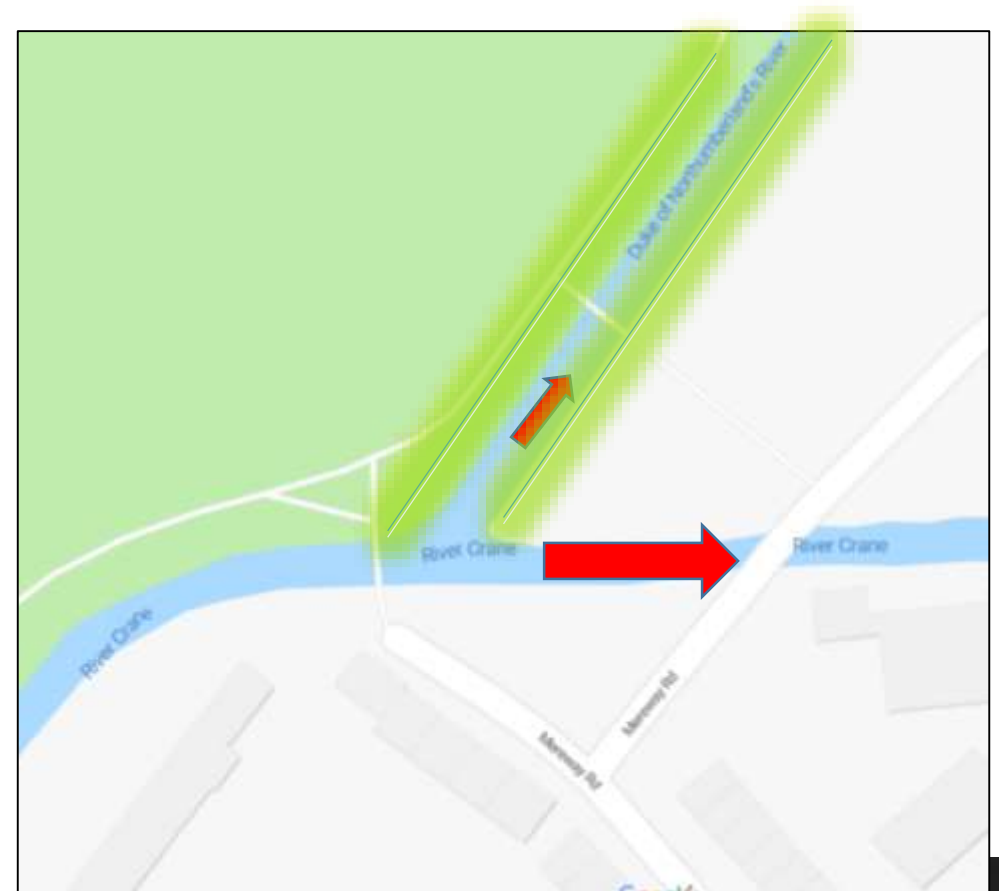
# How are we involving the local community with the project?

- Volunteer sessions (March)
- Project completion event (March)



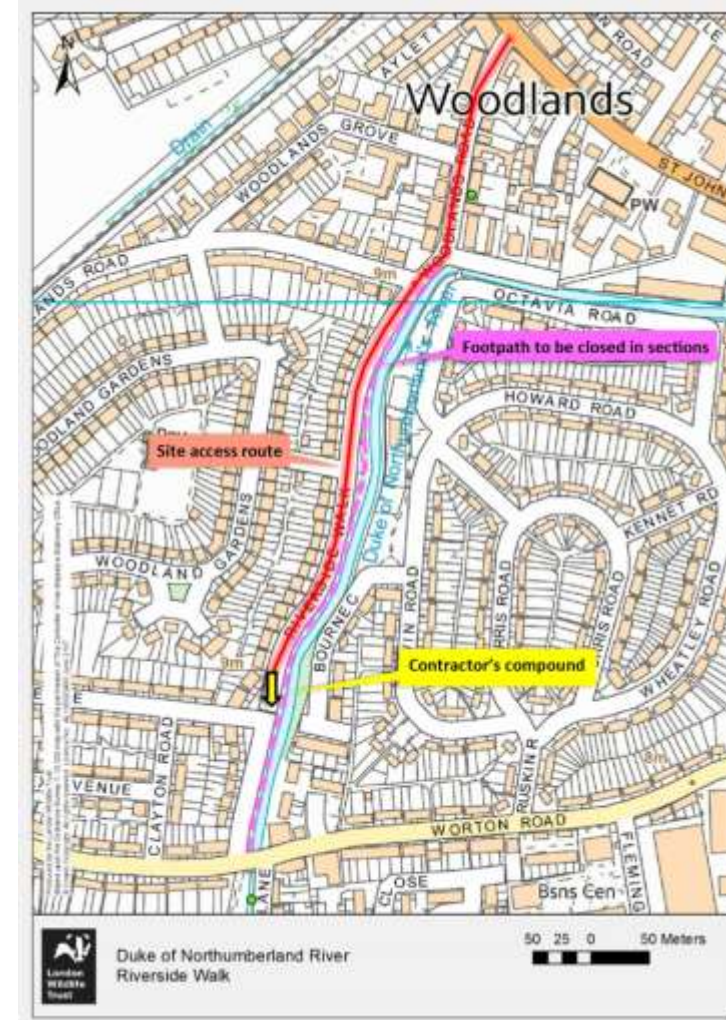
# Is there an increased risk of flooding?

- Water levels in the DNR are artificially controlled by the tilting weir upstream, at Kneller Gardens, Twickenham
- The weir divides the River Crane's flow between The Lower Crane and the DNR.
- The Environment agency have recently recalibrated the weir so that the Lower Crane now receives more water and the DNR receives less.
- This has reduced the risk of flooding on the DNR.
- The works we have proposed will ensure that the river is reprofiled to compliment the newly adjusted flow.

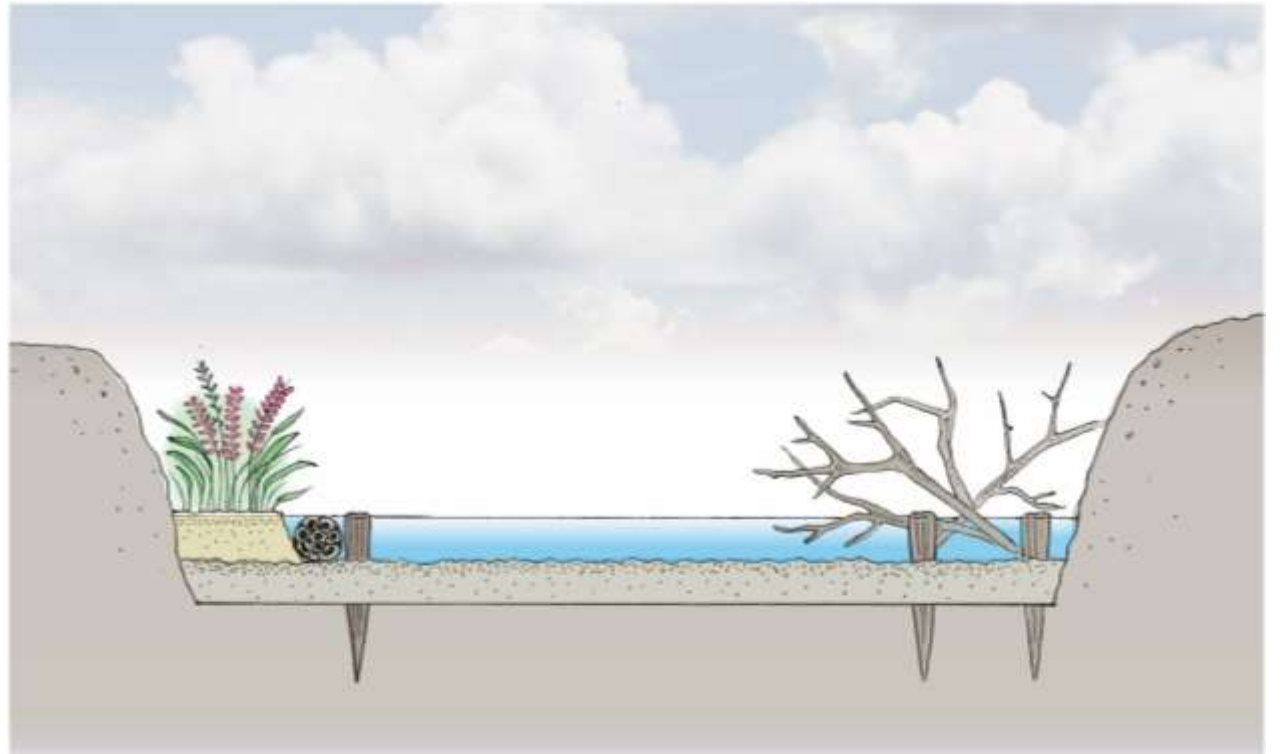


# When will the works take place and how will the site be accessed?

- The works will be delivered between 19<sup>th</sup> Feb – 9<sup>th</sup> March 2018
- The river will be accessed via Riverside Walk
- A compound for our contractors to work from will be located at the ‘dead end’ half way down the road.
- A 5m x 10m area will be closed prior to works to allow the compound to be erected.
- Deliveries of materials and equipment will be made at ‘off peak’ times so congestion is minimised
- The footpath next to the river will be closed in 100m sections as works progress downstream, so that the river can continue to be accessed.



# Thankyou, any further questions?



London Borough  
of Hounslow

